

Complete Liquidation - Owner Retiring  
Un-Reserved Public

# AUCTION

SATURDAY JULY 19TH @ 10:30 A.M.  
2980 HWY 50 GRAND JUNCTION, CO



300 Main Steet Suite 201  
Grand Junction, CO 81501  
970-523-5083

PRESORTED  
FIRST CLASS  
MAIL  
U.S POSTAGE  
PAID  
DENVER, CO  
PERMIT NO. 331

Complete Liquidation - Owner Retiring  
Un-Reserved Public

# AUCTION

SATURDAY JULY 19TH @ 10:30 A.M.

2980 S HWY 50 GRAND JUNCTION (ORCHARD MESA), CO



# AUCTION



2005 Stone Reversible Plate Compactor  
Towable Portable Air Compressor  
Mikasa Plate Compactor  
2005 MultiQuip JumpingJack Compactor  
2004 Mikasa Jumping Jack Plate Compactor  
DynoPak Towbehind Dozer Compactor  
Sthil Demo Saw  
Sthil Demo Saw  
Trench Box  
Multi Quip Pump  
HDPE Fusion Weld Mach 1"-4"  
2004 Wire Feed Welder  
Hammer Drill  
Misc. - Shop Tools, Equip, Fuel Tanks etc.  
Water & Sewer Testing Equip  
Transit Auto Level  
EDCO Electric Walk Saw.  
Brick Tongs.  
Drum Floor Sander.

Rotary Laser 2 Plane L600  
Spectra Physics Pipe Laser  
Lasers  
2000 gal. fuel tank, Skid Mounted w/ Electric Pump.  
Air Pumps & Metered Hose Reels.  
Hobart 10000 Watt Portable Welder Generator.  
27" Diamont T Gooseneck Trailer w/ Ramp.  
10KW Generator.  
Brad Nailer.  
Concrete Planer.  
Cordless Drill.  
Jitter Bug Roller Bug.  
3000 PSI Washer, Gas.  
12V Post Hole Digger.  
(2) Sand Blasters.  
Horse Tank.  
3 Point Airator.  
Concrete Blankets.

SATURDAY JULY 19TH @ 10:30 A.M.  
2980 HWY 50 GRAND JUNCTION, CO

Chipping Hammer.  
Air Calk Gun.  
3/4" Compressor.  
Work Lights.  
Lot Sweeper.  
Propane Bottles.

One Big Sale  
See You  
There!

TERMS: CASH & Good Checks. Checks should be accompanied with bank letter of credit/reference. All purchases must be paid for day of sale and before removal of merchandise. All items sold "As is - Where is". The Auction Company, nor owners are responsible for any accidents, loss, damage or injury to merchandise or person. Bidder is responsible for merchandise/purchase when Auctioneer says "SOLD". Sale day announcements take precedence over any advertisements. Auctioneer reserves the right to bid for grantors Visa & Master Card Accepted. Credit card purchases will incur a fee. A 10% buyers fee will be added to all purchases, NO exceptions. Titles are mailed in 14 banking days. Preview and Inspection Friday July 18th & Day of Sale Only. This Brochure is strictly a guide, buyer relies soley on thier own judgment for more info.

WWW.UNITEDAUCTIONEERS.NET



United  
Country  
Auction Services

970-523-5083  
970-570-9702  
970-560-4274





2006 Link Belt 330 LX Excavator, 1 Owner, Subject to prior sale, Quick Coupled Bucket, Aprox. 1920 Hours,s/n K6J61473.



2005 Linkbelt 225 Spin Ace Excavator, 1 Owner, Approx 3073 Hours.



2002 JD 200 C-LC Excavator w/ Hydraulic Thumb Aprox 5143 Hours, s/n FF200CX503158.  
2001 CAT 315 B-L Excavator w/ Quick Couple Bucket, approx 6070 hours, s/n 3AW02607  
John Deere 490D Excavator w/ 3 Buckets & Hydraulic Thumb s/n OK490DS015173.  
(2) Cat 215 LC Excavators s/n 96L1267 & Other.



2005 CAT 420 D Loader Backhoe, 4x4, 1 owner, E-Ropss/n CAT0420DEFDP20820, 4 wheel drive.  
2004 JD 410G Loader Backhoe, Power Shift, E-Rops, 4x4, approx 3146 hours.  
2002 CAT 430 D Loader Backhoe, Extend a Hoe, 4x4, s/n CAT0430DHBK00805.  
1984 Cat 140G Motor Grader, w/ Rippers, approx, 8726 hours, s/n 72V06601.



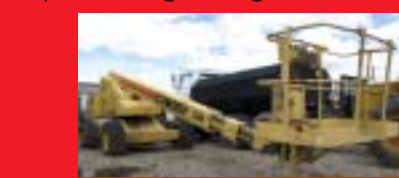
1987 John Deere 862B Elevating Scraper, 300 hous on new differential, 1600 hours on engine, 11500 hours on meter, s/n T0862BX738733.  
1998 Hypac C850B 84" Smoothdrum Compactor, recent new engine, 3224 hours, s/n 109B18802289.  
1991 CAT CP563 84" Sheepsfoot Compactor, Good Rubber, s/n 2WG01921.



1981 CAT D3-B Dozer, w/ Rippers, Newly rebuilt Engine.  
2006 John Deere 317 Skid Steer Loader, aprpx 900 hours..  
2006 John Deere 320 Skid Steer Loader subject to prior sale.  
2004 ASV RC100 Rubber Track High Track Skid Steer Loader, s/n RSD00496, approx hours 2342.



Gradall 534 D 6-42 Reachlift, approx 3484 hours, s/n 0588236.  
Takeuchi TBO-25 Mini-Excavator on rubber tracks s/n 1258200.  
Condor Calavar 58 All-Terrain Boom/Man Lift, 4 wheel drive.  
Bobcat 540 Skidsteer Loader, 20 h.p Kohler gas engine.



Skid Steer Trencher, Fork & Bucket Attachments.  
Portable Steam Cleaner, Propane Fired, Trailer Mounted.  
Compaction Wheel (Quick Connect Cat 315)  
Cyclone 96" Skid Steer Broom Attachment model 500445.  
Compaction Wheel (Backhoe)  
Compaction Wheel (Excavator)  
Compaction Wheel (Excavator Spike)



2000 Ledwell 3 Axle Detachable Lowboy Trailer, w/ Winch, Hydraulic Dove Tail, 255-70R 22.5LN Michelin Tires.



2001 Western STR-32 Round Rock Bottom Frameless End Dump Trailer w/ Electric Tarp.



1981 Timpote Model 301A Double Gated Bottom Dump Trailer, 20 Cubic Yard w/ Cramaro Electric Tarp System.



1982 Kenworth W-900 A Semi Truck Tractor w/NTC400 Big Cam II Engine, RTO 14613 Speed Transmission, SQHD Rear End w/ 4.63 Ratio, New Rear Ends, approx.763k Miles, Wet Kit, Quick Attach 14' Dump Box.



1997 Freightliner FL-70 Water Truck, Diesel, 9 Spd Transmission, approx 64k Miles.



1994 Kenworth T800 Semi Truck Tractor, Recent Rear End, Well Maintained.



1976 Ford LT-9000 Tandem Dump Truck, Cummins Engine, RTO 9513 Spd Tansmission, w/3500 gal. Slide in Skid Mounted Water Tank w/ PTO Driven Pump & Spray Bar, sold separate.



2003 Ford F350 Crew Cab Super Duty XLT Power Stroke, Automatic, Tow Package.



2002 Ford F-550 Service Truck w/ Crane, Diesel, 4x4.



2004 Ford F-450 Flat Bed Diesel, 4x4.  
2002 Chevy 2500 HD 4x4 Service/Utility Truck, approx 77k miles, 5 spd w/ Auxillary L-Shaped Fuel Tank & 12 Volt Pump.



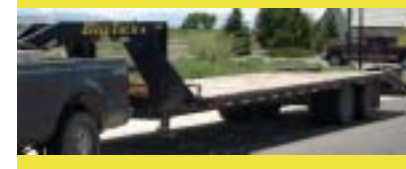
1984 Chevy 4x4 Work Truck w/ Winch, 4 spd.



2004 Diamond Back 14' Gooseneck Dump Trailer, Tandem Axle, 8 Hole Wheels, Good Condition.



1997 Trail Boss Model PI30T Tilt Bed Trailer 54,000 GVWR.



1989 Tandem Axle Flat Bed Shop Built Trailer.  
2001 Big Tex Tandem Dual Goose Neck Trailer Model 22GN-24, w/ Dove Tail & Ramps, 22,000lb.  
2005 18' Car Hauler Flat Bed Trailer.



2000 Diamond "D" Stock Combo Horse Trailer, Model 2320, 7,000 lb Axles.

1994 Econoline 12 Ton Flat Bed Equipment Trailer, Pentle Hitch, Dove Tail & Ramps. w/tanks

2003 WW Enclosed 14' Trailer w/ Side & Rear Doors.

2006 Loadrunner 18' Enclosed Trailer, w/ Side & Rear Doors.  
Pines Enclosed Job Trailer 31' Semi Van Trailer, S/A.

