

NO RESERVES
OWNER RETIRING
AUCTION

**SATURDAY MARCH 31ST @ 10:30
2100 Aztec NE Albuquerque, NM**

Bob Davis Masonry



Can't Attend The Auction Bid Online
www.unitedauctioneers.net



PO BOX 1658
CORTEZ, CO 81321
970-565-9645

www.unitedauctioneers.net

PRESORTED
FIRST CLASS
MAIL U.S.
POSTAGE
PAID
DENVER, CO
PERMIT NO. 331

NO RESERVES-EVERYTHING SELLS
Owner Retiring/Complete Liquidation

PROPERTY FOR
SALE OR LEASE
BY OWNER!

AUCTION

PROPERTY FOR
SALE OR LEASE
BY OWNER!

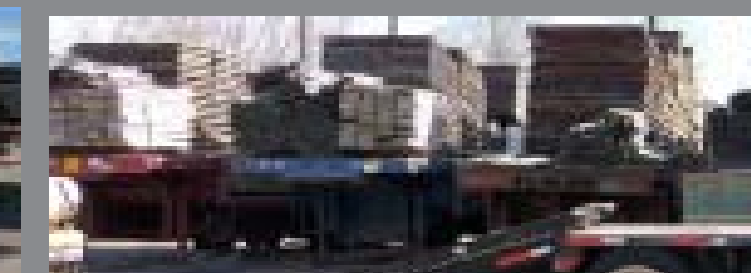


Bob Davis Masonry Inc.
Saturday March 31ST @ 10:30 A.M.
2100 Aztec NE Albuquerque, NM



(7) Grout Pumps

(2) Sky Trak 8042 & (3) Gradall 6-534-42 Reach Lifts



View of 48' Stepdeck Trailers & 1000's Of Sections of Scaffolding & Planks

(970) 560-4274 AUCTION (970) 570-9702

Full line of Shop Tooling & Equipment: New Ramco RS-90 Water Cooled Bandsaw, Ramco 50-Ton Hydraulic Bearing Press, Ramco 5000 Engine Hoist, Ramco Truck Bed Mount Cherry Picker, Lincoln 225 Amp AC Welder, Forney 235 Amp Shop Welder, Watchman II Roll-around Job Box, Dayton 16-Speed Drill Press, Chicago 5-Speed Drill Press, GrayMills DM 135 Parts Washer, Oxy-Acetalene Torch Set w/Lg. Bottles on Cart, Die Hard 200 Amp Boost Battery Charger, DeVilbiss Pro 4000 Air Compressor, Bench Grinders, Drills, Chain Hoist, Chains, Boomers, Wisconsin & Honda Gas Engines, Saw Table Bench w/Vice, 20-Ton Hydraulic Bottle Jack, (6) 5 gallon Buckets of Hydraulic Oil, Rebuilt Starters & Alternators, Freestanding Bolt Bin Carousel w/Stock, Aluminium & Fiberglass Extension Ladders. Assortment of good Equipment, Truck & Trailer Tires & Wheels, Tote Gote, MQ 5000 Generator, DeVilbiss Air Compressor, (3) 36" Bolt Cutters. Much more!

(2) 275 gallon Poly Water Tanks in Protective steel Bins.

Quantity of Foam Insulated Sheeting, Ridgid Insulation.



Full Line of Office Equipment & Furniture including Executive, Secretarial & other Desks & Chairs, Xerox 214 Copier, Legal, Letter & Lateral File Cabinets, Plans Tables & much more!



(2) 8' x 12' & 8' x 16' Storage Sheds.

(6) Pallet Jacks.

Contractors Wheel Barrows.

(10) Mortar Tubs.

(2) Georgia Buggies.

(4) Brick Barrows.

Internet Absentee Bidding Will End @ 7:00 P.M The Day Before The Sale. On Items where the bid is \$10,000 or more a Deposit For 25% Of The Bid Must Be Held By Auction Company With A Credit Card. This is not an online auction, these bids will be at a live auction, please bid accordingly. Not All Items Will Be Available For Internet Bidding!

Sale Site Directions:
Exit I-25 @ Commanche, Go East on Commanche, Take Immediate Right on Princeton, Right again on Aztec, Watch For Signs.

TERMS: CASH & Good Checks. Checks should be accompanied with bank letter of credit/reference. All purchases must be paid for day of sale and before removal of merchandise. All items sold "As is - Where is". The Auction Company, nor owners are responsible for any accidents, loss, damage or injury to merchandise or person. Bidder is responsible for merchandise/purchase when Auctioneer says "SOLD". Sale day announcements take precedence over any advertisements. Visa & Master Card Accepted. Credit card purchases will incur a fee. A 10% buyers fee will be added to all purchases, NO exceptions. Titles are mailed in 14 banking days. Preview and Inspection Friday March 30th 10 A.M to 5 P.M and morning of Sale only!!



WWW.UNITEDAUCTIONEERS.NET



2000 Skytrak 8042 Reachlift, 1,197 hours, four wheel drive, 8,000 lb., 42' reach, s/n 13767.
 1999 Skytrak 8042 Reachlift, 3,308 hours, four wheel drive, 8,000 lb., 42' reach, s/n P691922248.
 Gradall 6-534D-42 Reachlift, 2,371 hours, Four wheel drive, 6,000 lb., 42' reach, s/n 0688039.
 Gradall 6-534D-42 Reachlift, 3,027 hours, Four wheel drive, 6,000 lb., 42' reach, s/n 0588717.
 Gradall 6-534D-42 Reachlift, 3,169 hours, Four wheel drive, 6,000 lb., 42' reach, s/n 0588359.



1977 P & H Hydraulic Crane Model W-250, 25 Ton, Four Wheel Drive, 64' 10" 3-section boom, 16' manual insert, 20' Jib, Cummins V-504C Diesel Engine, s/n 43476.
 1989 Cat V50 D Forklift, 5,000 lb., 188" 3-stage mast, pneumatic tires, propane/gas engine s/n 03ECO4382.
 1988 Cat V40 D Forklift, 4,000 lb., 188" 3-stage mast, pneumatic tires, propane/gas engine s/n 04BC00971.
 Champ 350 Towable Forklift.
 Forklift Safety Cages, 8' & 4' lengths.
 (2) Block/Brick Fork attachments.
 Concrete Bucket for Cranes.



New-unused MQ Mayco 2" Grout Pump, Model C-30 HD.
 1999 Schwing P88 2" Grout Pump-Trailer.
 1998 Schwing P88 2" Grout Pump-Trailer.
 1993 Schwing P88 2" Grout Pump-Trailer.
 (4) Mayco Grout Pumps, 2", Trailer.
 (10) Grout Pump Hoses.



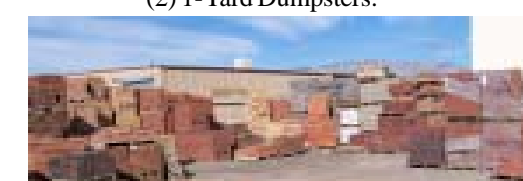
New-unused MQ Essick Mortar Mixer, Model EM 120 SH (Hydraulic)w/Honda gas engine, Trailer.
 New-Unused MQ Essick Mortar Mixer, Model EM 120 SM, Trailer.



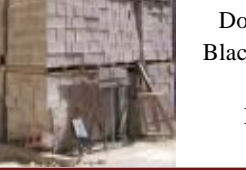
(2) Stone Mortar Mixers, Trailer.
 Essick Mortar Mixer, Trailer.
 New-unused Target 20" Block/Brick Saw.
 (4) Target 20" Block/Brick Saws, electric.
 Clipper 20" Block/Brick Saw, electric.
 (4) MK 14" Masonry Brick Saws, electric.
 (2) MK 5000 20" Block & Brick Saws, gas engines.



Edco 14" Brick Saw, gas engine.
 Grimmerschmidt 105 CFM Air Compressor, 503 hours, w/Hammer & Hose, Trailer.
 Lindsay 300 Sandblast Pot & Gear.
 Landa 4-3000 Hot Water Washer w/200 gallon Poly Water Tank mtd. On Trailer
 (4) 2-Yard Dumpsters.
 (2) 1-Yard Dumpsters.



100's of Pallets of Un-used Brick; Partial listing to include approximately: 5,000 Canyon Rose, 5,500 Inca Summit, 7,000 Blonde, 3,000 Beige/Tan Blend, 1,500 Grey, 1,500 Dark Iron Spot, 1,500 Sand Finish Rose, 1,200 Lite & Modular Velour, 3,000 Chicago Used Brick & Dozens of other Colors in similar quantities. 800 Dark Iron Spot Pavers (Endicott), 1,000 Black Pavers, 2,000 Pink Rose Pavers, assortment of other Paver Bricks in similar Quantities. 1,500 Fluted Brick 4" x 8" x 8" Copper Bronze, 3,500 Mountain Red 8" x 4" x 16" Interstate.



1996 International 9200 Conventional Truck Tractor, M11 Cummin, 10 Spd, New Tires.
 1983 International Flatbed Dump single axle, Diesel, 13-speed.
 1978 International Loadstar 1600 Flatbed Truck, automatic.
 1960's Ford Custom Cab Flatbed, Tandem, 5 & 4 Trans.
 1977 Ford F-350 Custom w/12' Dump Body.
 1996 Fruehauf 48' Step Deck Trailer, Model PSD-T2W-48W, 22.5 Tires, s/n 1H2P04821TW017801.
 1995 Utility 48' Step Deck Trailer w/22.5 Tires, s/n 1YUFS2483SA619402.
 1995 Utility 48' Step Deck Trailer w/22.5 Tires, s/n 1UYFS2481SA619401.
 1994 Doonan 48' Step Deck Trailer w/22.5 Tires, s/n 1D9BG4828K1208018.
 1993 Fontaine 45' Step Deck Trailer, Model DFT-5-8045 w/Dovetail & Ramps, 22.5 Tires, s/n 13N245203P1558173.
 1982 Trail-Eze 48' Step Deck Trailer w/Dovetail & Ramps, 22.5 tires, s/n 5863280.
 1980 Miller Equipment Trailer, s/n 22971.
 (2) 3-axle equipment trailers
 2000 HD 16' x 82" Trailer, s/n 5CNHF1623YC000749.
 Trailmobile 40' Semi Van Trailer w/side door, s/n M64878.
 Fruehauf 40' Semi Van Trailer w/side door, s/n MEK-8381-01.

1999 Ford F-250 Lariat Super Duty Powerstroke V/8, Automatic, Leather, Quad cab, new tires.



400 + Feet EZ Scaffold, Hydraulic Scaffolding w/new unused Weather Protection.
 1,600 Sections of 6' Scaffolding
 1,200 Sections of 5' Scaffolding
 165 sections of 4' scaffolding
 4,000 Braces, 1,200 Screw legs, 580 Safety Posts, 1,100 Rails, 1,360 Long Planks, 600 + New & used Sidearms, 120 Mortar Stands.



Dozens of Pallets of Un-used Cinder Block; Partial listing to include approximately: Burnished, Smooth & Split Face. 1,400 Black CMU 8" x 8" x 16", (200) 10" x 8" x 16", (2,400) Sound Block 8" x 8" x 16", 1000's of Split Face, Smooth, Solids, Spectra Glaze & others Various sizes & Quantities. (80) Décor Glass Block 12" x 12" x 4" & (9) bags of Glass Block Mortar. Large Quantity of DuroWall, 4", 8" & 12"-10,000 + feet. Full Boxes & Bins of Masonry Box Ties, Anchors, Straps, etc. PVC Control Joint Gasket Material.

Sale Site Phone & More Info

(970) 570-9702
(970) 560-4274

